

ATS&R



Thompson Middle School Community Meeting

April 21, 2008

Agenda...

- Introduction
- Approach to Evaluation
- Building utilization review
- Small group activity
- Reporting / Prioritization

ATS&R Background- School Specialists

- 63 Years as school specialists
- 98% of workload is PreK-12 schools
- Staff of 84 with in-house services:
 - Pre-Referendum Planning
 - Facilities Master Planning
 - Architectural
 - Mechanical/ Electrical
 - LEED Certification
 - Technology
 - Site Development
 - Construction Administration
 - Interior Design
 - Specifications/ Quality Control
 - Total Energy Checkpoint
- National Exposure
 - School Experience Nationally and Internationally
 - CEFPI-AASA-ASBO-NSBA-ITTE-CSI-NASSP
 - Recognized Presenters/Authors



District 303 Vision Statement

C.U.S.D 303
St. Charles School District

“The District 303 School Community empowers and inspires ALL to

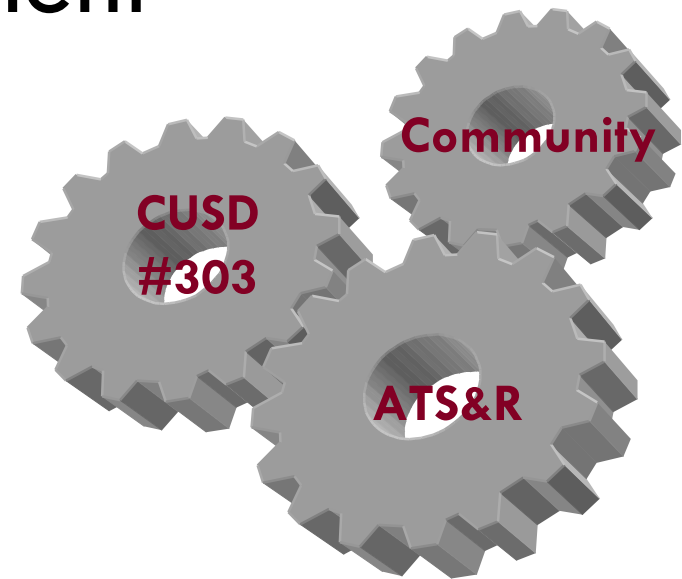
- Attain excellence
- Learn with passion, and
- Live with integrity in a changing world.”

Agenda...

- Introduction
- **Approach to Evaluation**
- Building utilization review
- Small group activity
- Reporting / Prioritization

Approach to Evaluation

- Comprehensive assessment of all schools
- Community group involvement
- Developing a Master Facilities Plan



St. Charles North High School

Develop a Master Facilities Plan

Providing a solid foundation for the Master Plan

- Supported by the assessment and community engagement process
- Responds to research on demographics, space, etc.
- Open, honest communication with the community
- Guide for planning and improvement projects for the next 20 years



STANDARDS – Middle Schools



ROOM SIZES	Min	High				Notes
Classrooms	900	950	15	-	25	students
Special Education						
Small Group	450		5	-	8	students
Classroom	800					
Lab	1,200					
Science	1,200	1,500				
Classroom / Lab	1,200	1,400				
Storage / Lab prep	300					
Art	1,200	1,500				
Multi / Paint / Drawing Lab	1,200	1,500				plus storage
3D - Ceramics / Clay lab	1,500					plus clay / kiln / stor
FACS	1,200	1,500				
Classroom / Lab	1,200	1,500				
Technical Education	1,200	1,500				
Tech Lab	1,800	2,400				plus storage
CADD / Graphics	1,400	1,800				plus storage
General Shop	2,000	3,000				plus storage
Music (General)	1,000	1,500				
General	1,000	1,200				
Instrumental	1,500	2,700				
Choral	1,200	2,000				
Physical Education (PE)	6,000	7,000				
Multipurpose room	1,700					
Weights / Fitness	2,000					
PE storage	300					per station
Learning Resource Center						
Reading (w/ comp. resource)	5,000	5,800	1000	-	1200	students
Support	600					
Computer Lab	1,000	1,300	20	-	30	students
Food Service						
Dining	3,300	4,500	1000	-	1200	students 4 periods
Kitchen	1,500	2,500				serving - prep
Support	1,600	1,700				
Student Services (Admin / Staff)	4,000	5,000	1000	-	1200	students
Resource / Support						
Small Group	150	200	5	-	10	students
Large Group	600	1,500	60		125	students

SITE SIZES	Min	High				
Site (acres) 20 +1/100 students	30	32	1000	-	1200	students
Site (acres) 25-35 +1/100 students (plus ROW, wetlands, retention, on site water or septic systems)	35	47	1000	-	1200	students

EXPECTATIONS - All Schools

Safety:

Clear separation of bus / staff / visitor / walker site circulation
Site lighting

Security:

Active / passive systems
Controlled access entry / community use zone (s)

Accessibility:

ADA access to all teaching stations, community, staff areas
Appropriate special services rooms

Building:

Natural light to Classrooms
Appropriate type / size of teaching stations (Flexibility)
Core capacity to match building capacity

Ventilation:

Code required (+/- 12-15) CFM per person

Electrical:

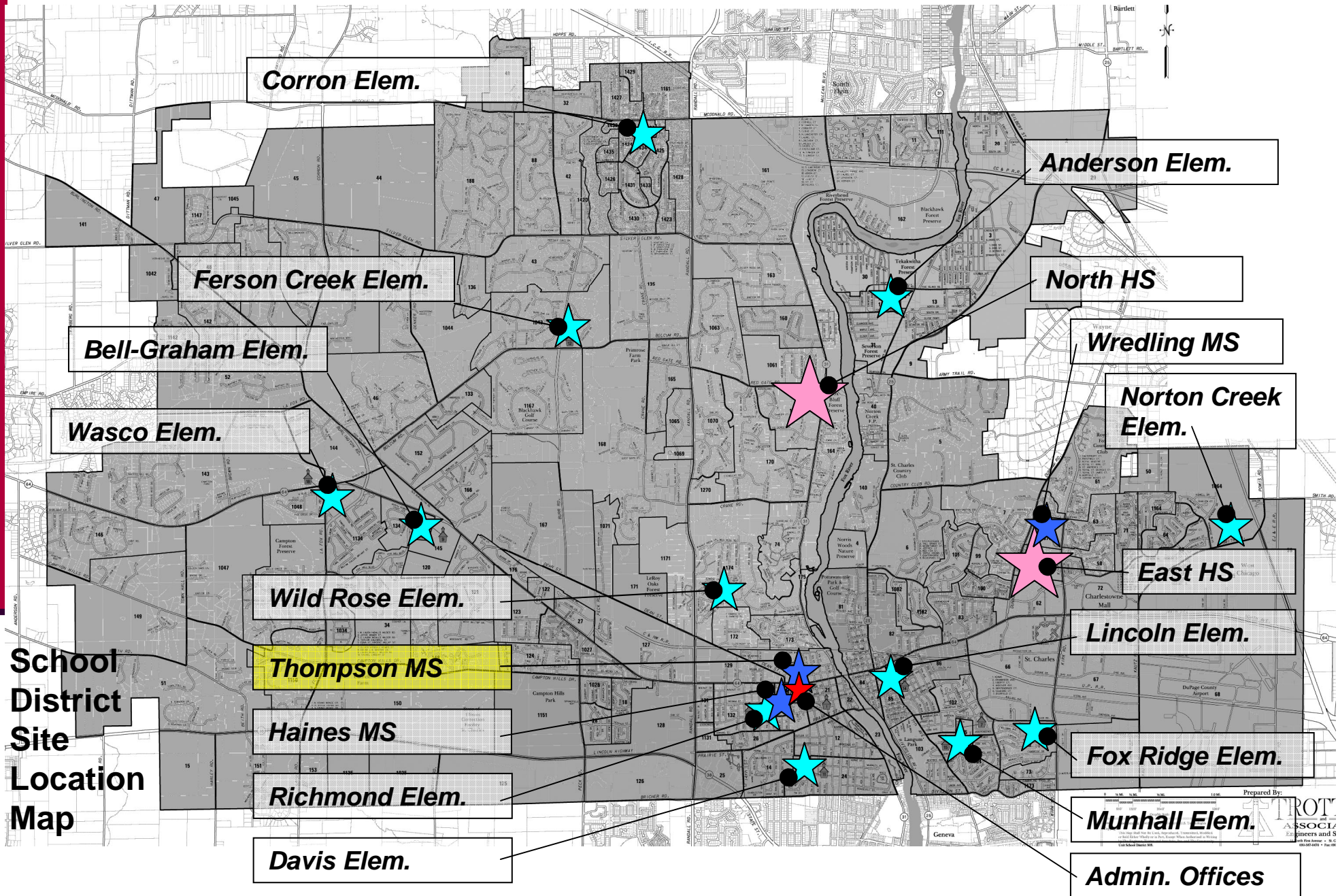
Properly sized electrical to support needs of site and building

Technology:

Appropriate Voice / Video / Data systems

Agenda...

- Introduction
- Approach to Evaluation
- **Building utilization review**
- Small group activity
- Reporting / Prioritization



Prepared By:

ROY ASSOCIATES
Engineers and Surveyors

1100 Fox River - St. Charles, MO 63075
636-586-1100

Thompson Middle School



Site Plan

Feb 15 2008

Thompson Middle School

SITE:

48.4 Acres
(incl. Haines MS
/ Richmond
Elem)

SCP guidelines:
60 acres
(25+26+9 acres)

BUILDING:

133,294 sf

962 Students

139 sf / student

MDE guidelines:
160-190 sf / student

Built – 1925

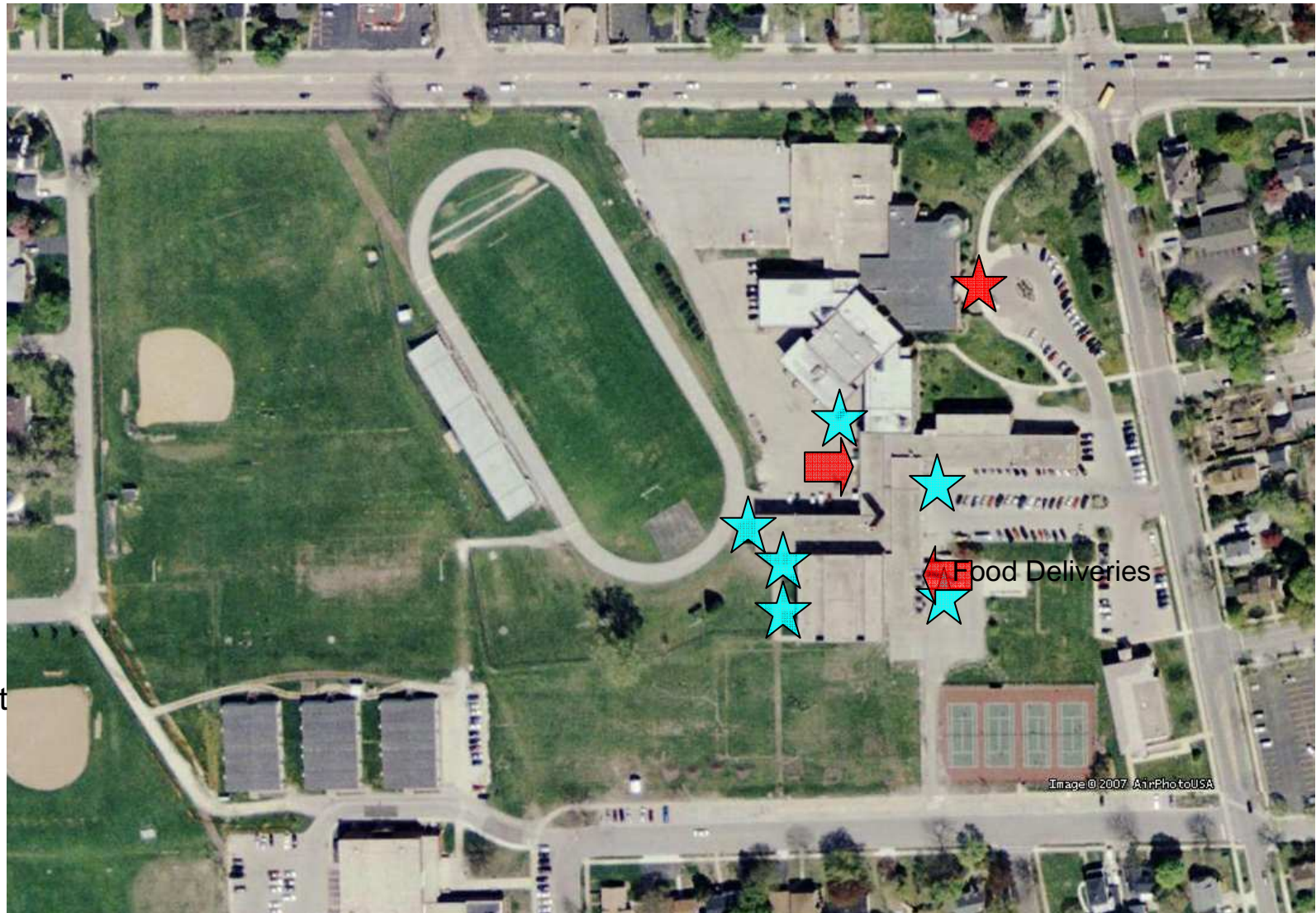
Add'n – 1952

1957

1962

1969

2000



Site Plan

Feb 15 2008

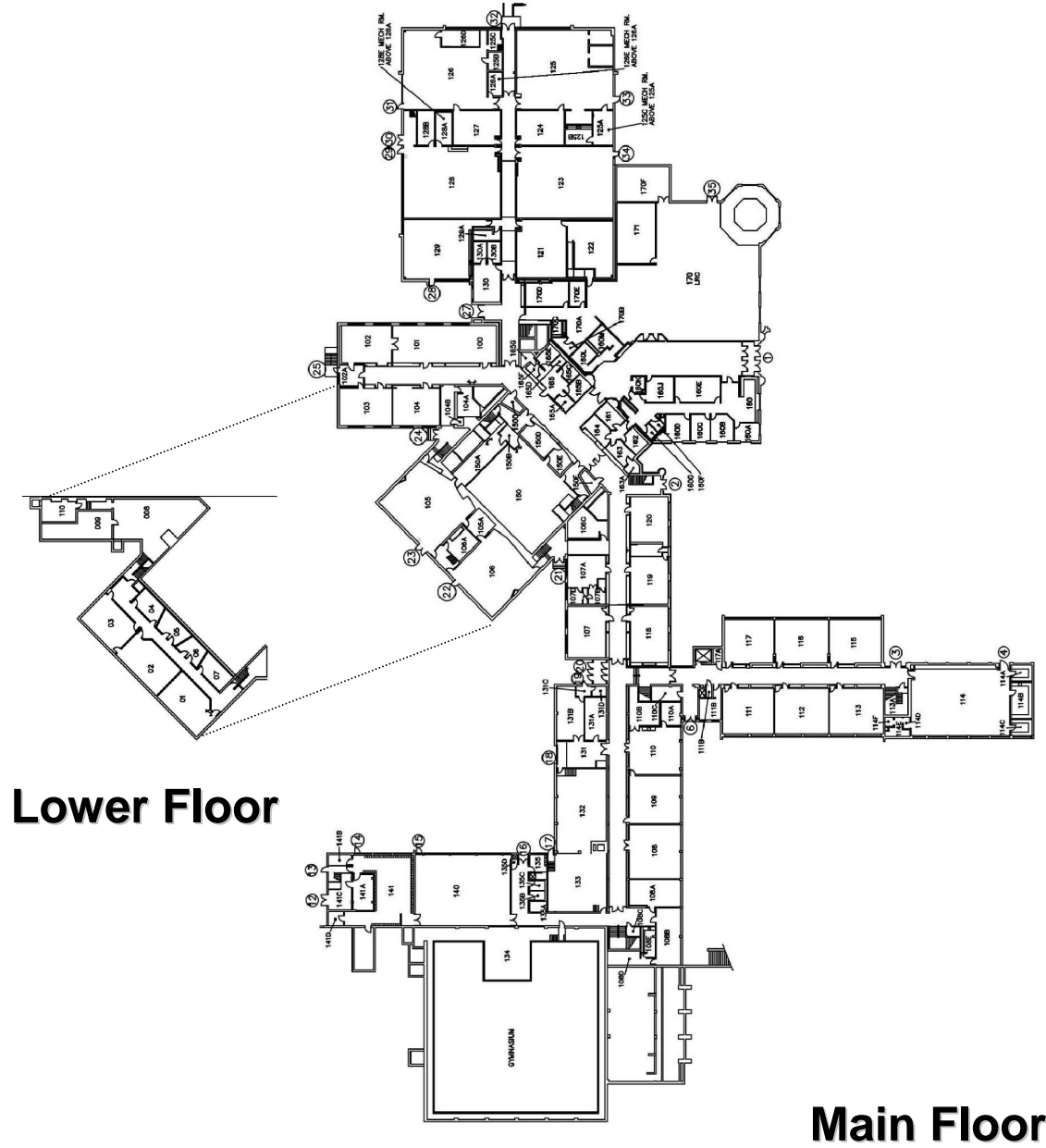
Thompson Middle School



Site Plan

Feb 15 2008

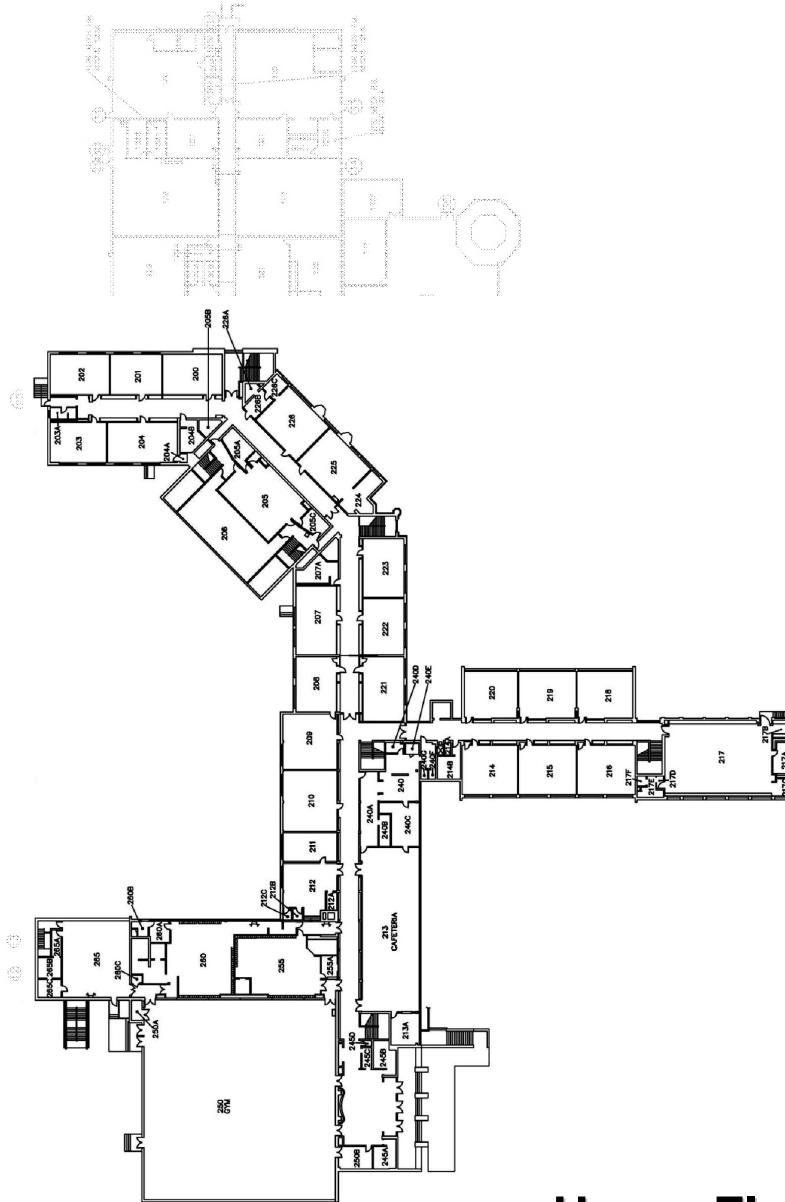
Thompson Middle School



Lower Floor

Main Floor

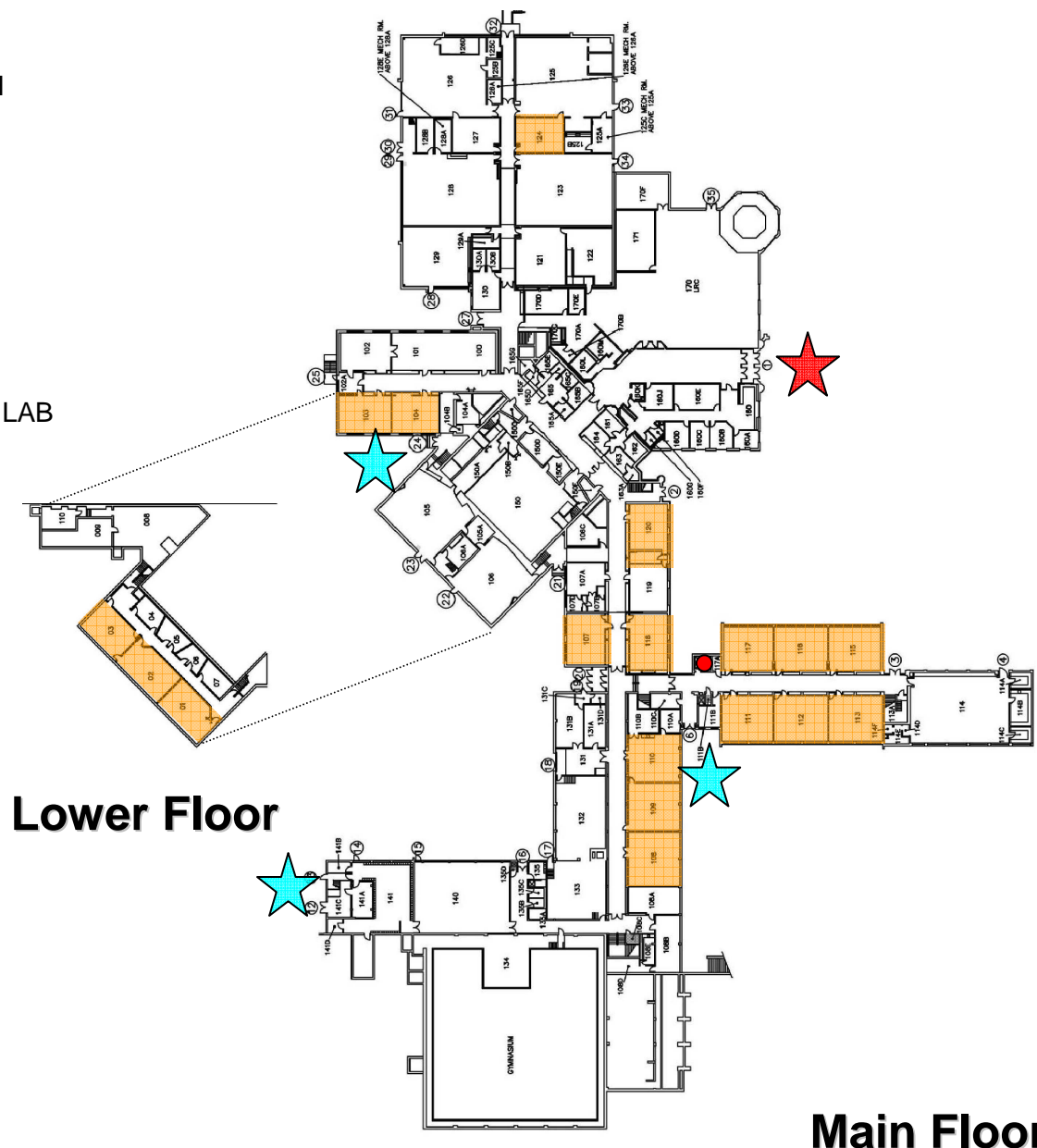
Thompson Middle School



Upper Floor

Thompson Middle School

-  CLASSROOM
-  SPECIAL NEEDS
-  COMM. / LANG. / HEALTH
-  SCIENCE
-  ART
-  FACS
-  MUSIC
-  AUDITORIUM
-  TECH. ED.
-  P.E.
-  MEDIA CENTER / COMP LAB
-  STUDENT SERVICES
-  FOOD SERVICE
-  LARGE GROUP / FTLA
-  MECH / ELEC
-  DISTRICT / COOP



Lower Floor

Main Floor

Thompson Middle School

- CLASSROOM
- SPECIAL NEEDS
- COMM. / LANG./ HEALTH
- SCIENCE
- ART
- FACS
- MUSIC
- AUDITORIUM
- TECH. ED.
- P.E.
- MEDIA CENTER / COMP LAB
- STUDENT SERVICES
- FOOD SERVICE
- LARGE GROUP / FTLA
- MECH / ELEC
- DISTRICT / COOP

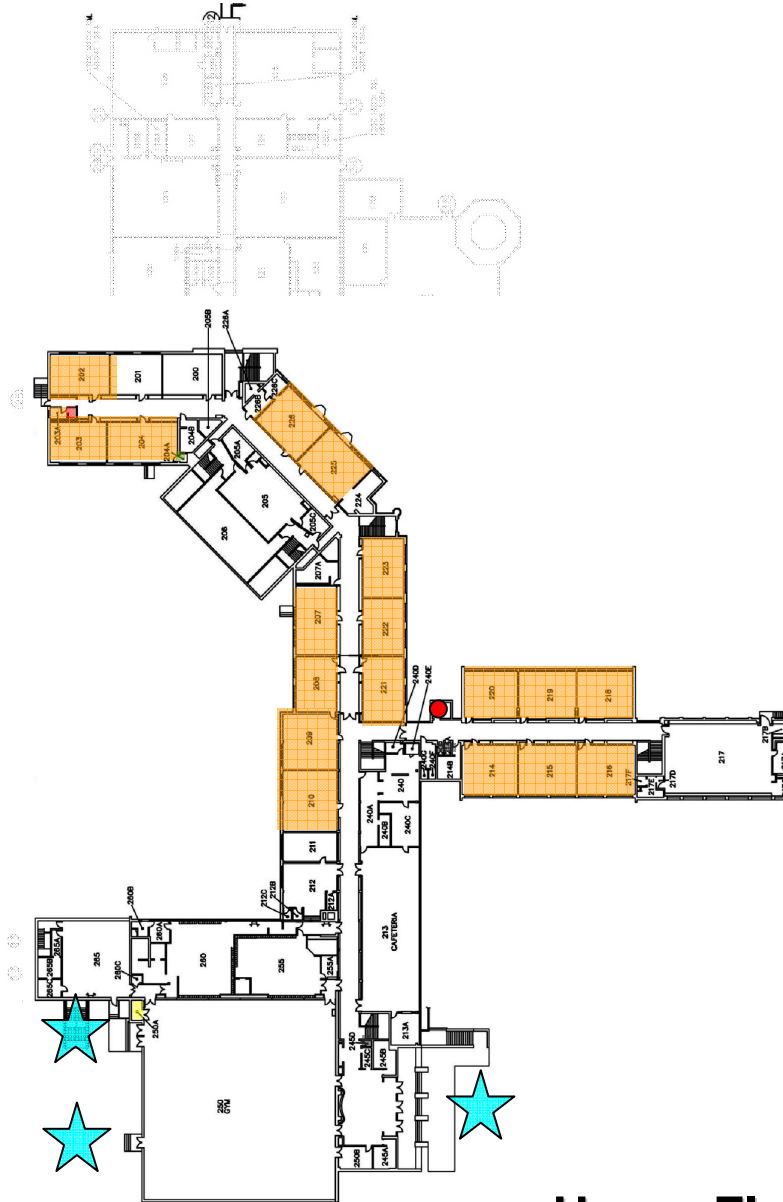


Lower Floor

Main Floor

Thompson Middle School

-  CLASSROOM
-  SPECIAL NEEDS
-  COMM. / LANG. / HEALTH
-  SCIENCE
-  ART
-  FACS
-  MUSIC
-  AUDITORIUM
-  TECH. ED.
-  P.E.
-  MEDIA CENTER / COMP LAB
-  STUDENT SERVICES
-  FOOD SERVICE
-  LARGE GROUP / FTLA
-  MECH / ELEC
-  DISTRICT



Upper Floor

Thompson Middle School

-  CLASSROOM
-  SPECIAL NEEDS
-  COMM. / LANG. / HEALTH
-  SCIENCE
-  ART
-  FACS
-  MUSIC
-  AUDITORIUM
-  TECH. ED.
-  P.E.
-  MEDIA CENTER / COMP LAB
-  STUDENT SERVICES
-  FOOD SERVICE
-  LARGE GROUP / FTLA
-  MECH / ELEC
-  DISTRICT



Upper Floor

Thompson Middle School

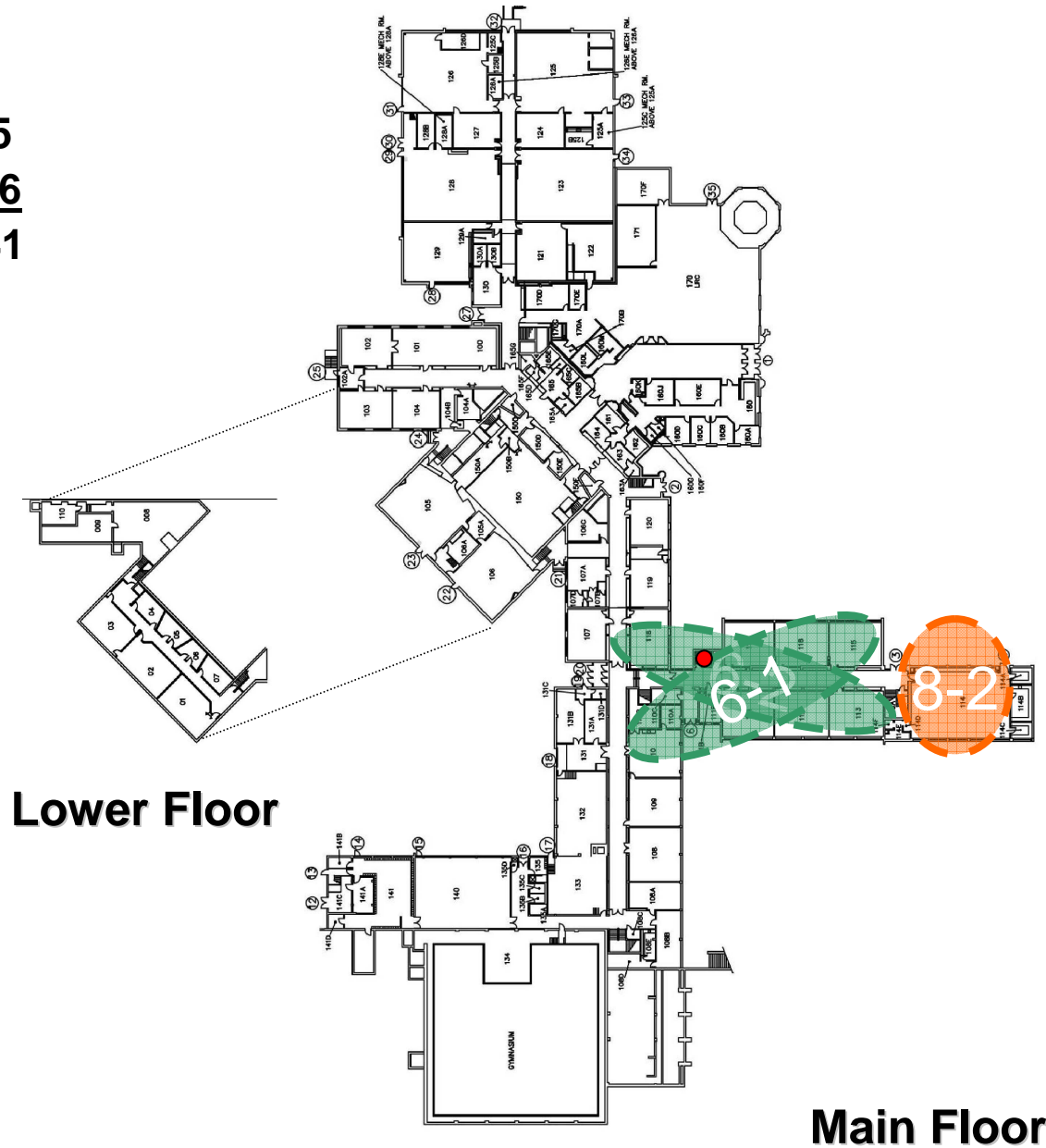
Grades 6-8

Teams: 6

Science labs: 5

Classrooms: 36

41



Lower Floor

Main Floor

Thompson Middle School

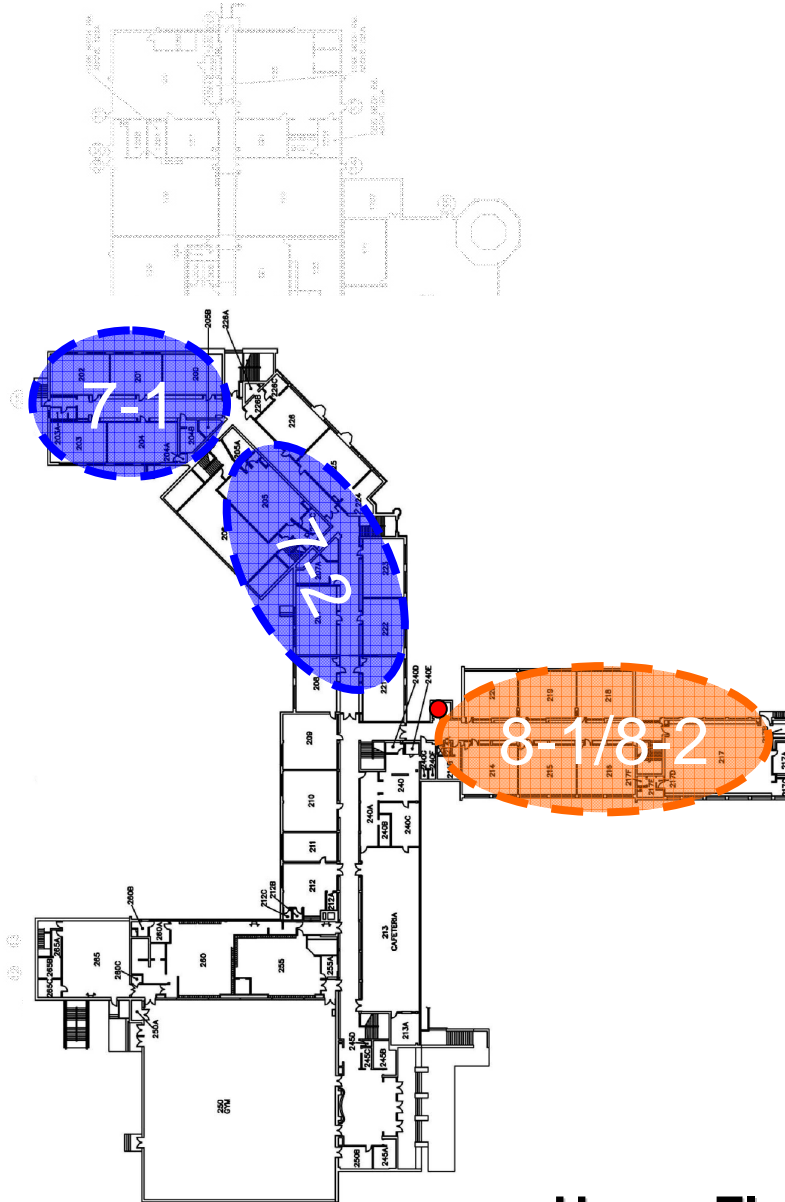
Grades 6-8

Teams: 6

Science labs: 5

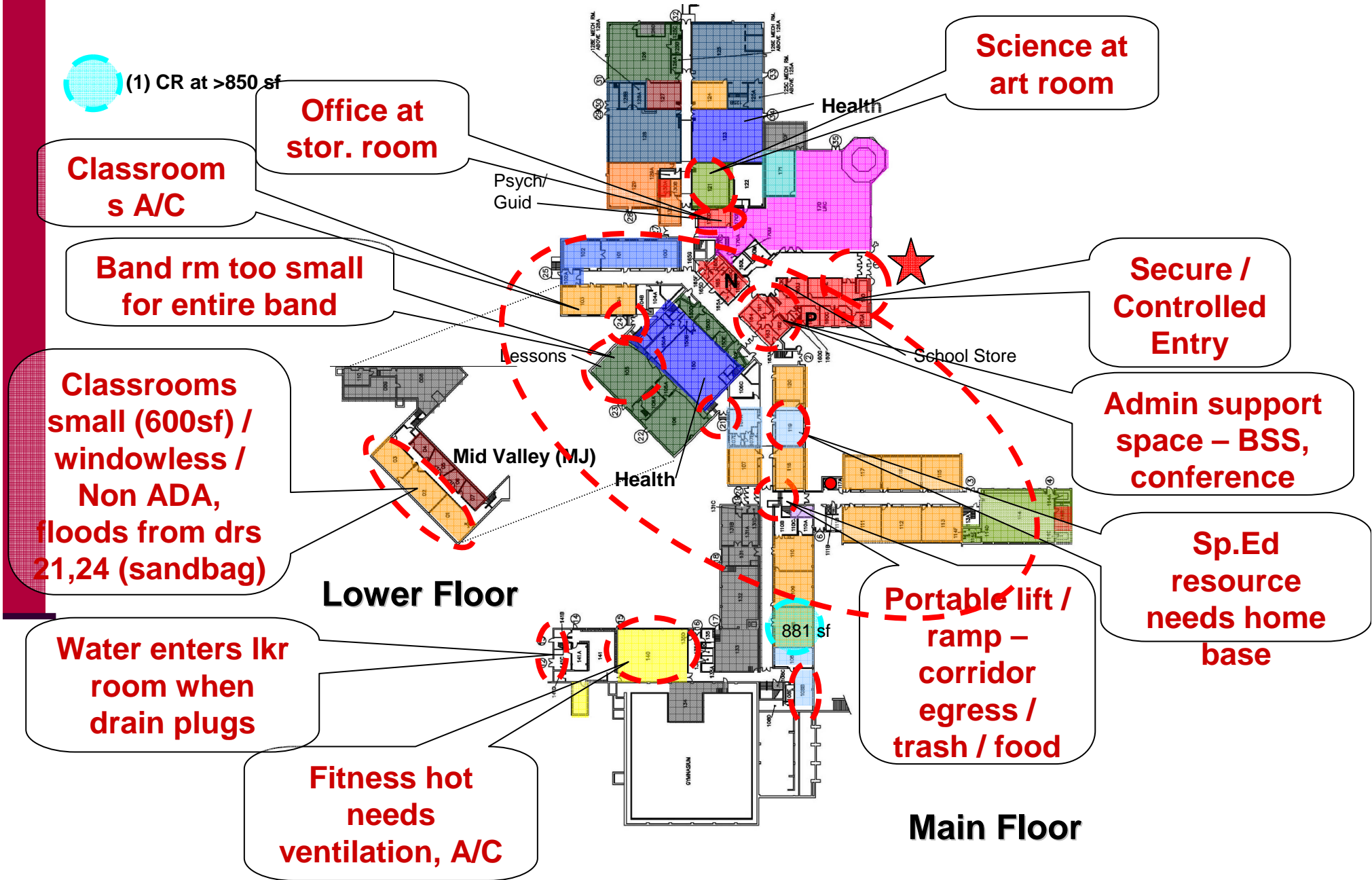
Classrooms: 36

41




Upper Floor

Thompson Middle School



Thompson Middle School

 (1) CR at >850 sf

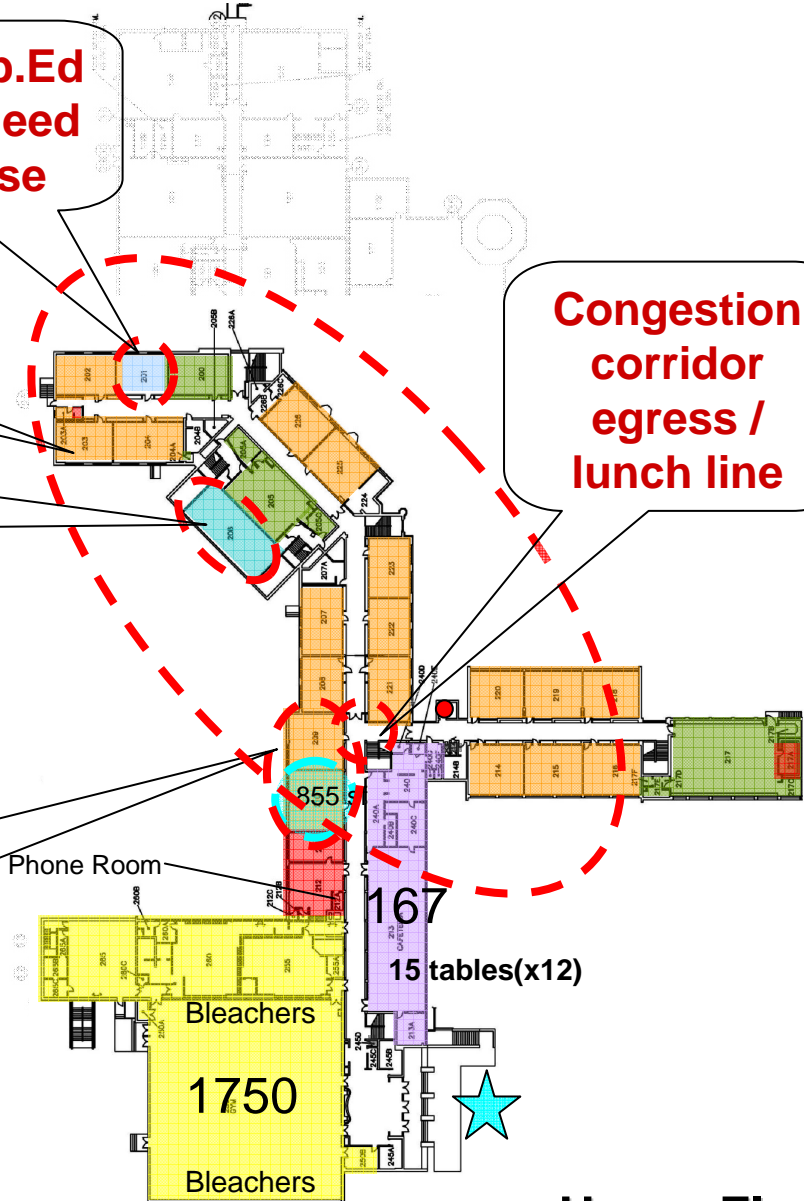
Multiple Sp.Ed teachers need home base

Classrooms A/C

Drop-in computer lab scheduled class

Congestion corridor egress / lunch line

Classrooms hot / humid need ventilation

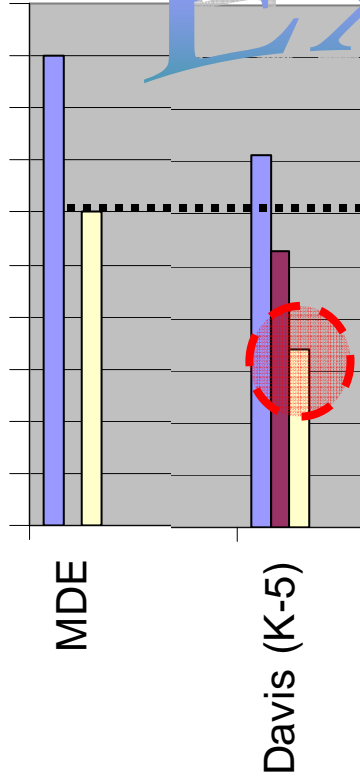


Upper Floor

KINDERGARTEN ROOMS

Square Footage

1,600
1,500
1,400
1,300
1,200
1,100
1,000
900
800
700
600

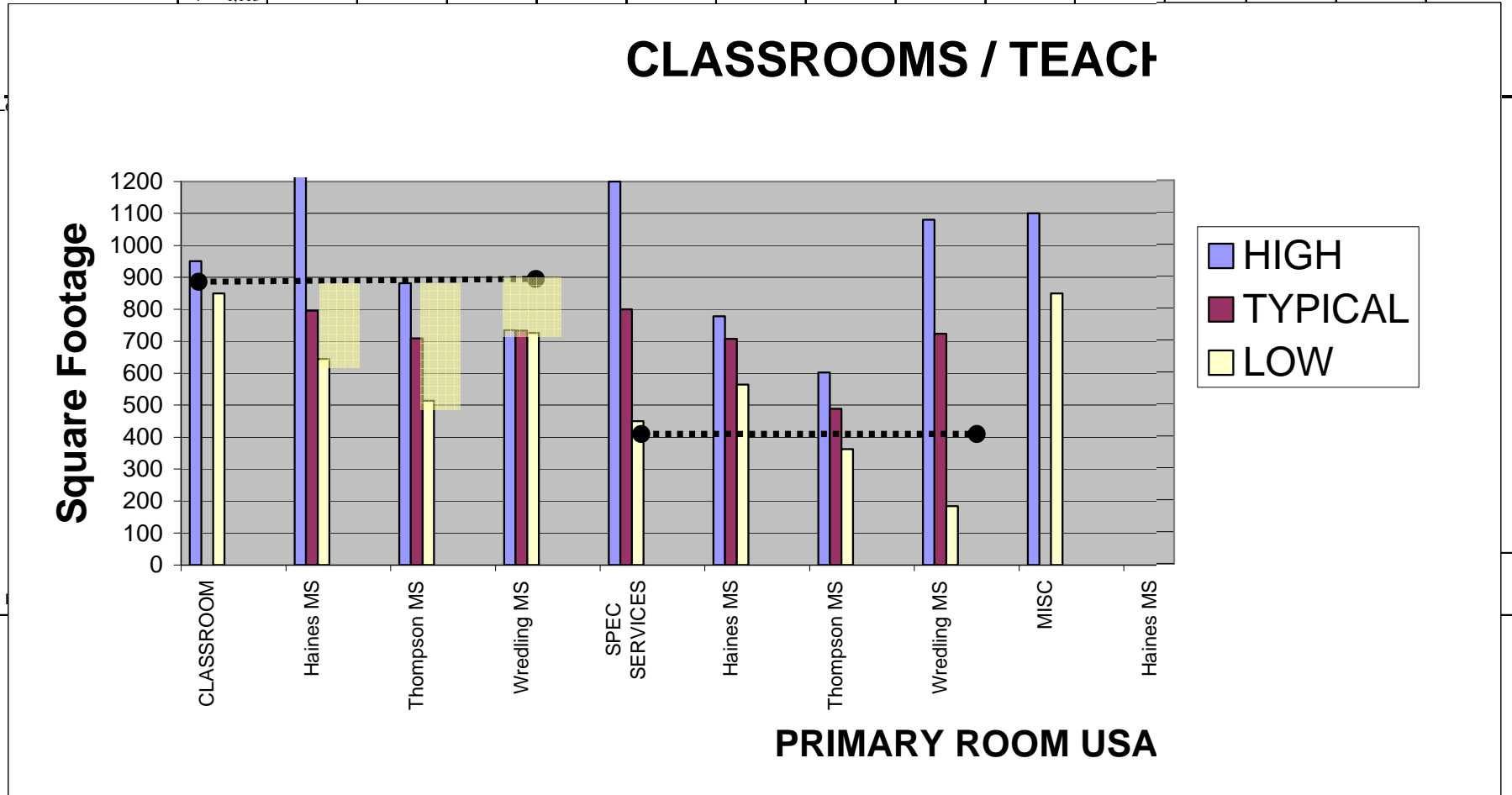


Example

	Cottonwood (K-5)		Davis (K-5)		Ferson Creek	
HIGH		1,509		1,314		1,392
TYPICAL		1,509		1,127		1,392
LOW		1,509		940		1,392
	2	1,509	1	1,314	2	1,392
1,200 sf or large	<hr/>					
Less than 1,200 s			1	940		
TOTAL	2	3,018	2	2,254	2	2,784

CLASSROOMS: GENERAL / SP.ED.– MIDDLE SCHOOLS

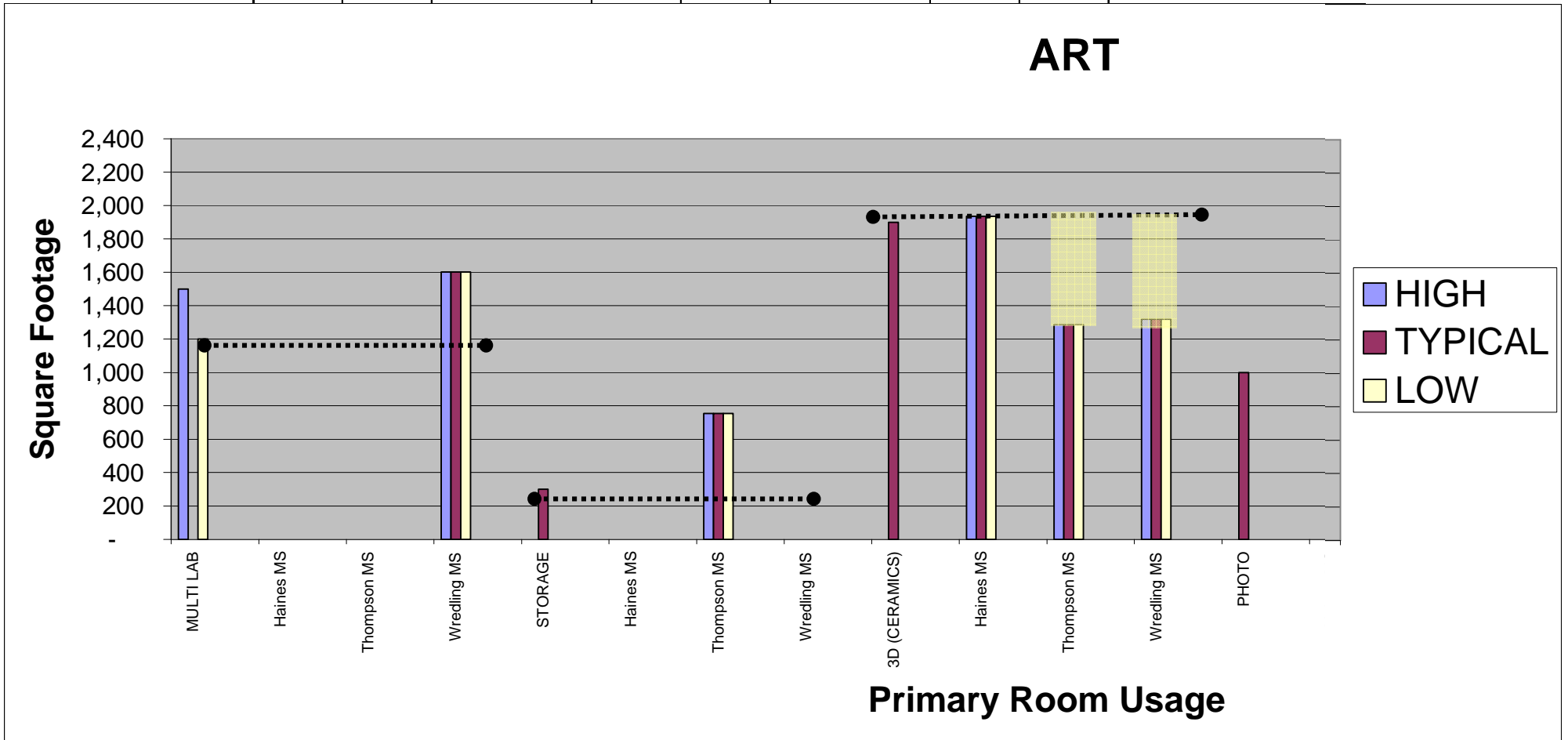
	CLASSROOM			SPEC SERVICES			MISC			TEAM LEARNING		
	Haines MS	Thompson MS	Wredling MS	Haines MS	Thompson MS	Wredling MS	Haines MS	Thompson MS	Wredling MS			
HIGH	950	1,244	881	735	1,200	778	602	1,080	1,100	-	-	-
TYPICAL		796	709	734	800	707	488	723		#DIV/0!	#DIV/0!	#DIV/0!
LOW	850	644	514	726	450	565	362	184	850	-	-	-
	1	1,244										
	1	1,113										



St Charles District 303

ART ROOMS – MIDDLE SCHOOLS

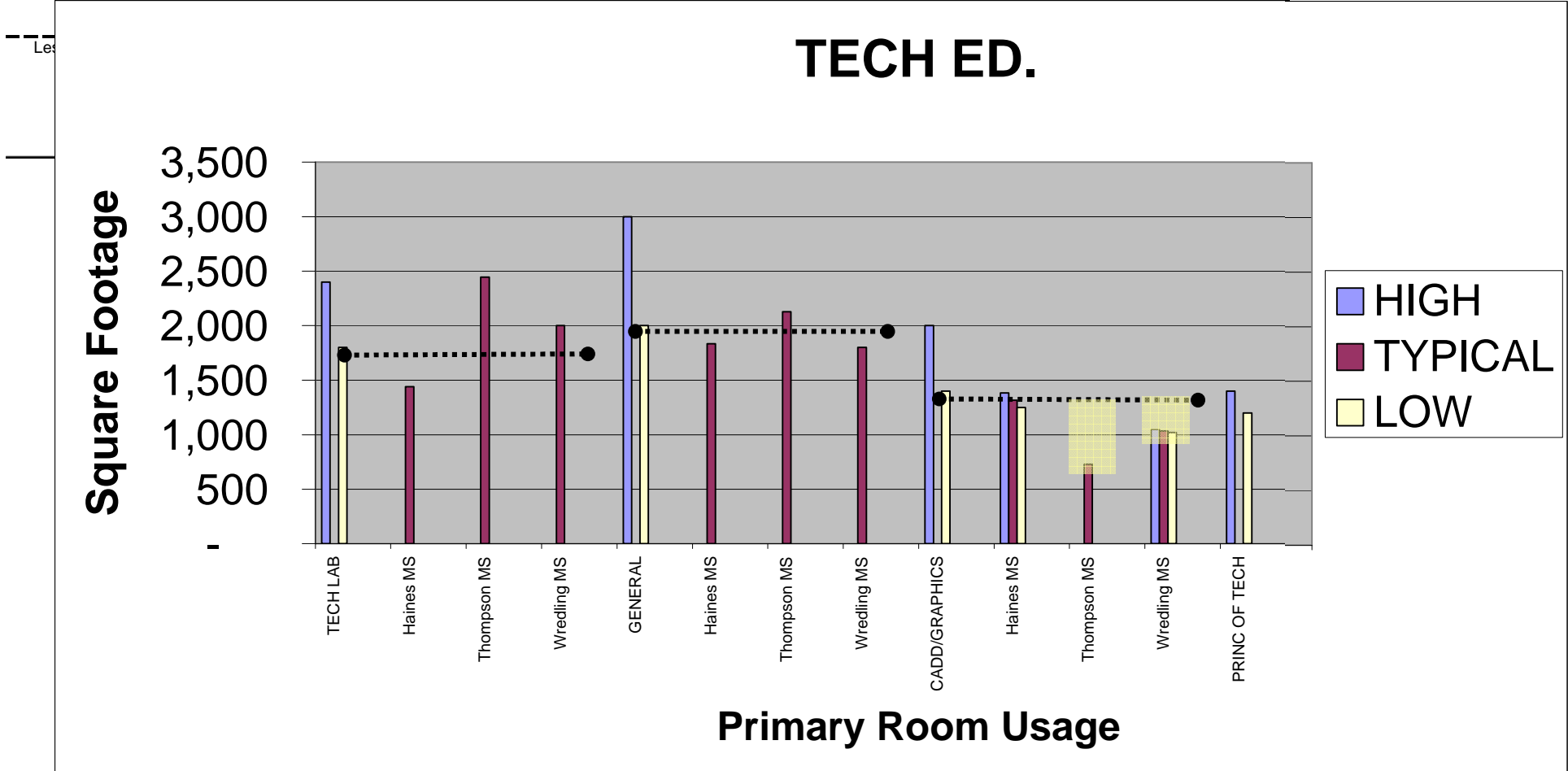
	MULTILAB			STORAGE			3D(CERAMICS)		
	Haines MS	Thompson MS	Wredling MS	Haines MS	Thompson MS	Wredling MS	Haines MS	Thompson MS	Wredling MS
HIGH	1,500	-	1,601	-	754	-	1,936	1,288	1,320
TYPICAL	#DIV/0!	#DIV/0!	1,601	#DIV/0!	754	#DIV/0!	1,936	1,288	1,320
LOW	1,200	-	1,601	-	754	-	1,936	1,288	1,320



St Charles District 303

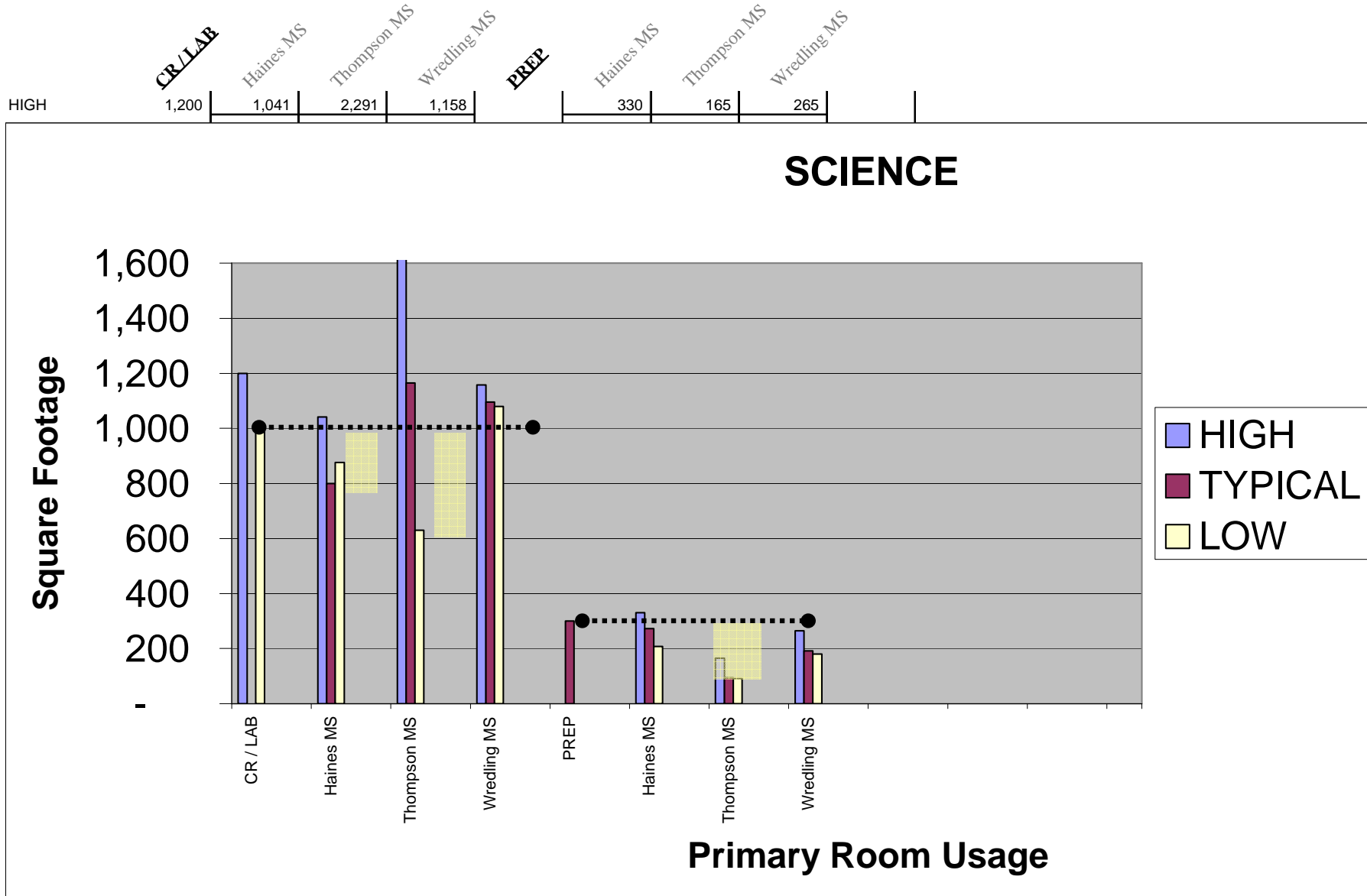
TECHNOLOGY EDUCATION – MIDDLE SCHOOLS

	TECH LAB			GENERAL			CADD/GRAPHICS		
	Haines MS	Thompson MS	Wredling MS	Haines MS	Thompson MS	Wredling MS	Haines MS	Thompson MS	Wredling MS
HIGH									
TYPICAL	1,441	2,446	2,000	1,833	2,128	1,800	1,384	728	1,036
LOW							1,248		1,021



St Charles District 303

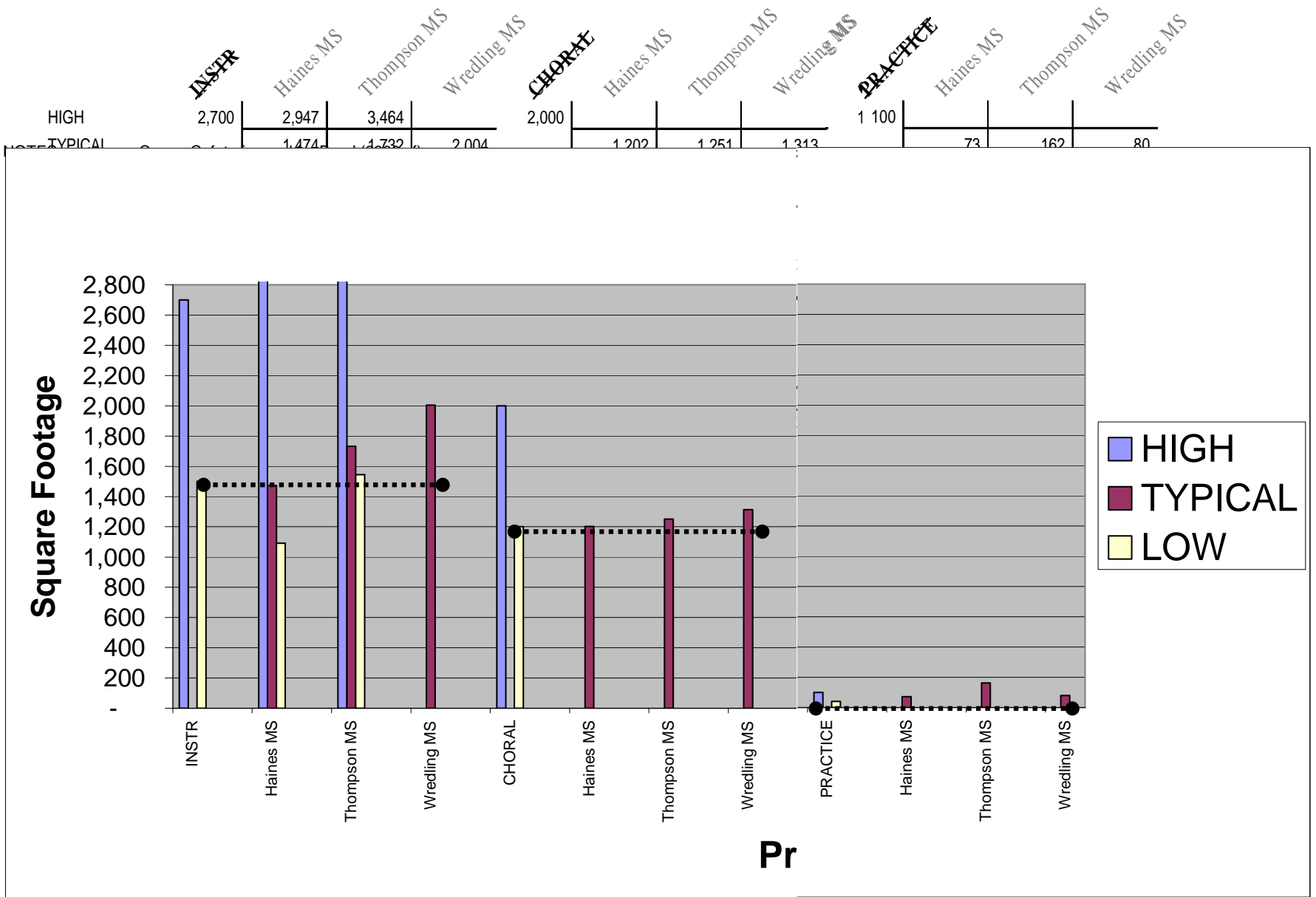
SCIENCE LABS – MIDDLE SCHOOLS



NOTES: .1 Wredling Sci lab used for general instruction

St Charles District 303

MUSIC ROOMS – MIDDLE SCHOOLS

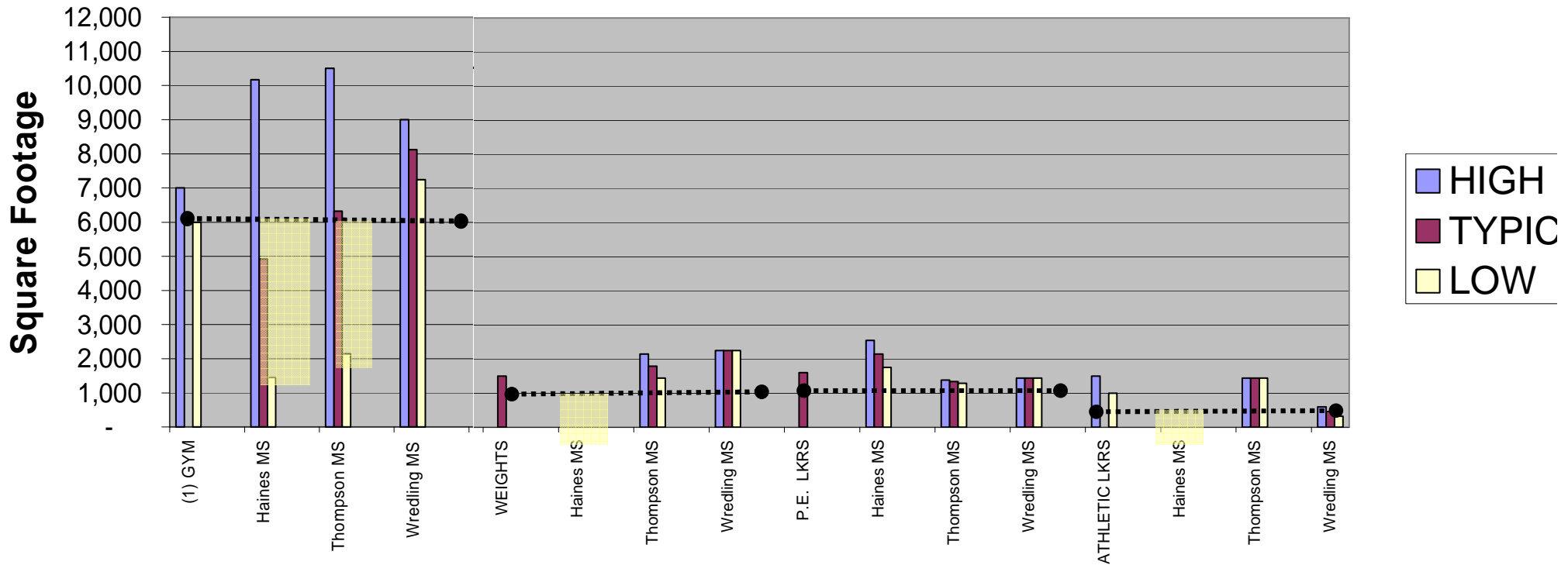


St Charles District 303

PHYSICAL EDUCATION / ATHLETICS – MIDDLE SCHOOLS

	(1) GYM	Haines MS	Thompson MS	Wredling MS	WEIGHTS	Haines MS	Thompson MS	Wredling MS	P.E. LKRS	Haines MS	Thompson MS	Wredling MS	ATHLETIC LKRS	Haines MS	Thompson MS	Wredling MS
HIGH	7,000	10,170	10,504	9,000	-	2,146	2,248	2,248	2,546	1,383	1,440	1,440	1,500	-	1,440	600
TYPICAL		4,920	6,325	8,121	#DIV/0!	1,793	2,248	2,248	2,149	1,335	1,440	1,440	#DIV/0!	1,440	463	
					-	1,440	2,248	2,248	1,751	1,286	1,440	1,440	1,000	-	1,440	326

P.E. / ATHLETICS

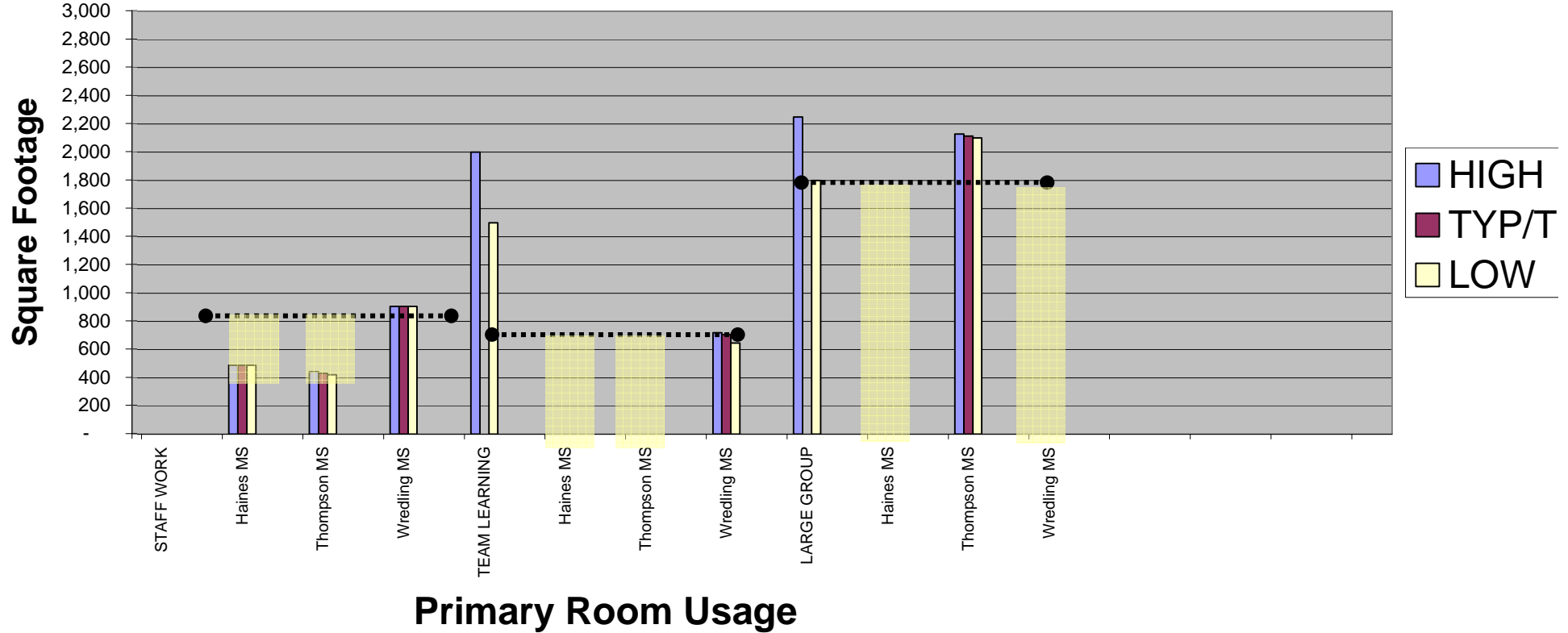


St Charles District 303

STAFF / TEAM LEARNING / LARGE GROUP – MIDDLE SCHOOLS

	STAFF WORK			TEAM LEARNING			LARGE GROUP				
	Haines MS	Thompson MS	Wredling MS	Haines MS	Thompson MS	Wredling MS	Haines MS	Thompson MS	Wredling MS		
HIGH	489	444	906	2,000	-	-	720	2,250	-	2,128	-
TYP/TEAM	489	433	906	#DIV/0!	#DIV/0!	705	#DIV/0!	2,115	#DIV/0!	#DIV/0!	#DIV/0!
LOW	489	420	906	1,500	-	-	647	1,800	-	2,101	-

TEAM PLANNING / STAFF AREAS



St Charles District 303

Agenda...

- Introduction
- Approach to Evaluation
- Building utilization review
- **Small group activity**
- Reporting / Prioritization

Main themes from groups at Summit 303 meeting on facilities (Mar 13)

- Safety and Security
- Increase Classrooms / class size - crowding
- Indoor air quality
- ADA / accessibility
- Space for programs / future needs

Your Input...

- List the sources of pride and strengths of **Thompson Middle School**.

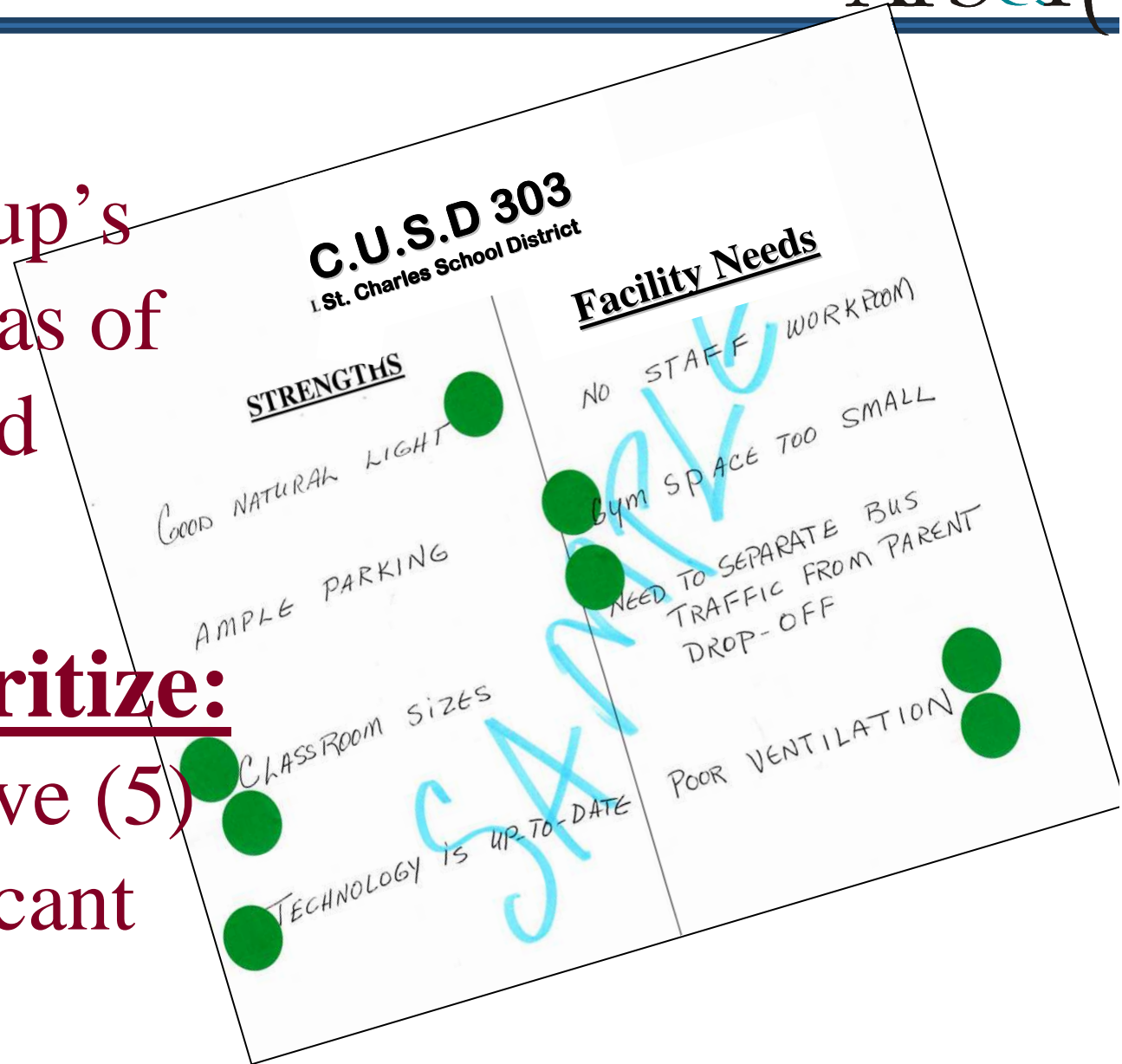
- List **facility** improvements (needs) that should be made for **Thompson Middle School**.

Record:

All of the group's reported areas of strengths and needs.

Group Prioritize:

Identify the five (5) most significant needs.



List the sources of pride and strengths of Thompson Middle School

- New Addition – Blends w/ existing building / LRC & Administration
- Grade Level Orig. – Separation of grades / separation of students
- Athletic fields
- Orchestra room & GYM
- Office & Main Entry
- Good collaboration between 2 middle schools (principals)
- Good collaboration / creative use of space in spite of facility constraints
- Accommodation of special needs program in spite of facility constraints

Identify the top 5 facility improvements/ needs that should be made for Thompson Middle School

1. Ventilation / I.A.Q. (6)
2. Parking Lot Flow / Car / Bus / Student Waiting Area – Entry / Exit, Quantity of spaces / lighting (6)
3. Water at lower levels – concerns w/ potential mold (6)
4. Size / Quantity of classrooms (average of 24 – 30 students in general classroom) (4)
5. Cafeteria is small (4)

(the number in parenthesis () indicates the number of votes received during the prioritization process)

Other:

- Stage / Fine Arts performance area (3)
- Security (3)
- Appropriate teacher work space & resources (computer) (2)
- Air conditioning (1)
- Narrow hallways / congestion (1)
- Accessibility / A.P.A. (1)
- Toilet sanitary line problems (0)
- Appropriate special needs spaces (size / quantity) (0)

(the number in parenthesis () indicates the number of votes received during the prioritization process)

Thank You...